

Ownership Mark



Warp weighted loom

If I have to stay at home and tend the farmstead when my husband goes out to sea, the very least he can do is send me home a package in the Spring when it warms up. This last time I sent him with a small piece of fabric to wrap my package in. He had better send me something good or he can sleep in the barn.

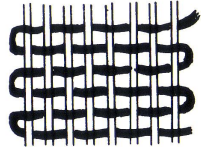
The Norse left their mark on many objects, for example brooches have been found that have a craftsmen's repair mark on them, wooden tags to assemble buildings note which piece goes where and everyday items have an owners mark on them. I found owners marks or makers marks on a number of items that were before the time period I was interested in and several very good examples of tags from the 1200 or 1300's. I am making the assumption that, if the tags existed before and after the 1000's, then it is just a matter of time before we find a tag for the missing time period.

Ownership tags were common in most of the areas settled by the Norse. They were used to send packages home. The goods would be wrapped in a piece of fabric and the tag used to hold the bundle closed. It would then be placed on a ship bound for home. My tag reads Kaleeb's Pile in Rune Futhark. This is the style of runes which were in use from 700-1200AD, in Anglo-Saxon areas. The Rune Futhark alphabet has 33 sounds or letters.



Textile fragment

The ownership tag should be inserted into a coarsely woven piece of fabric. I figured my first attempt at weaving on a warp weight loom would qualify as crudely woven. The warp is a wool two ply yarn that is in the grease. The term in the grease means, that the lanoline has not been washed out of the yarn before it was processed. I figured that wool which is spun in the grease is easier to spin, hence closer to my spinning talents. (They are not very strong.) I chose a simple tabby weave, for my first experiment, as it is the easiest weave to produce. (I also made the loom. It still has a few quirks that still need to be worked out.)



Tabby weave

The Ownership tag could easily have been made from several of the tools found in the Mastermyr Tool Chest. (I have power tools.) The Gotland Tool Chest was found while plowing a field in Mastermyr in October 1936. (It is referred to as the Mastermyr find or tool chest.) The contents have been kept intact. Scholars feel the tool chest belonged to a blacksmith who had carpentry skills. It is even possible that the owner may have been a boat-builder. The tools which interested me were the ones related to carpentry. They include 2 axes, 2 adzes (used to smooth planking), 2 saws (one of which is an unusual hand saw) a large collection of spoon-augers (used to drill holes), gouge (used with mortise and tenon joints), chisel, 2 rasps and 4 files (generally considered smithing tools), and a small whetstone. It is difficult to date the find because carpentry tools do not tend to have stylistic characteristics



Gunna owns



Thorgrims pile



Wooden scoop with owners mark



Melbrigda owns this brooch